

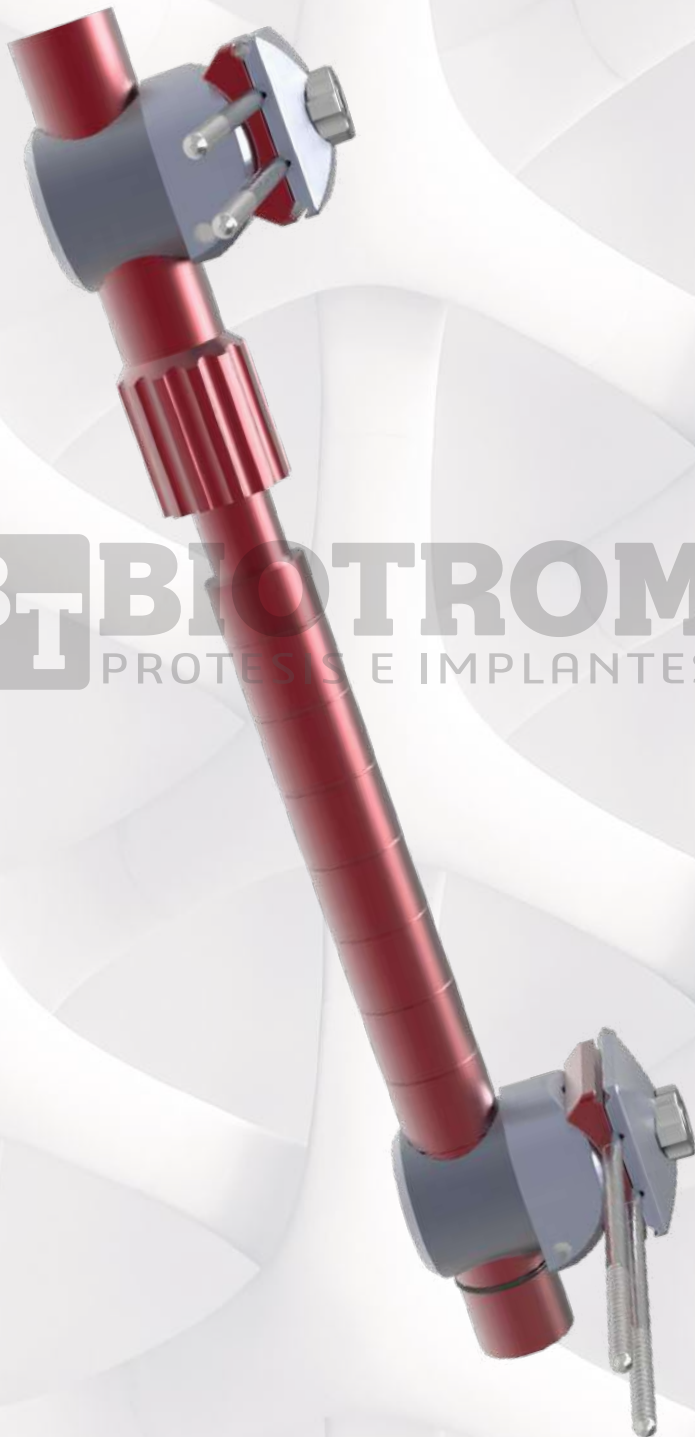


BIOTROM

PROTESIS E IMPLANTES

TUTOR EXTERNO

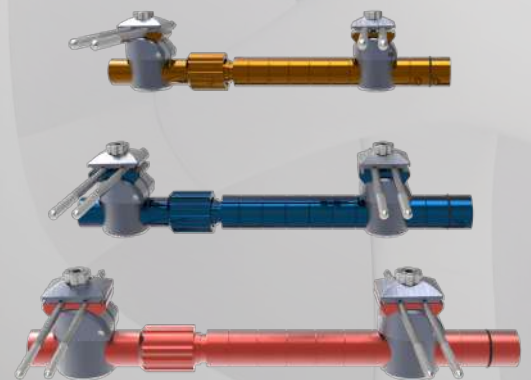
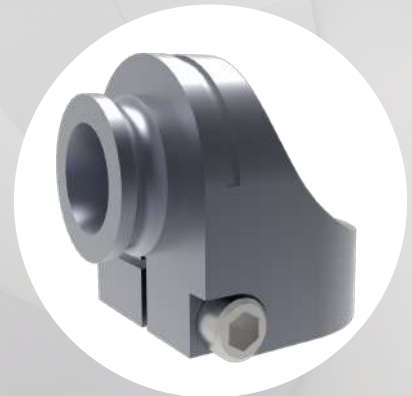
FIJADOR MONOTUBULAR



BIOTROM
PROTESIS E IMPLANTES

ACERO QUIRÚRGICO

DETALLES



Schanz cónico Ø 5 mm



Medidas:

- 120 x 35 mm
- 150 x 45 mm
- 180 x 55 mm

Material: acero

quirúrgico y opción
titanio a pedido.

www.biotrom.com.ar