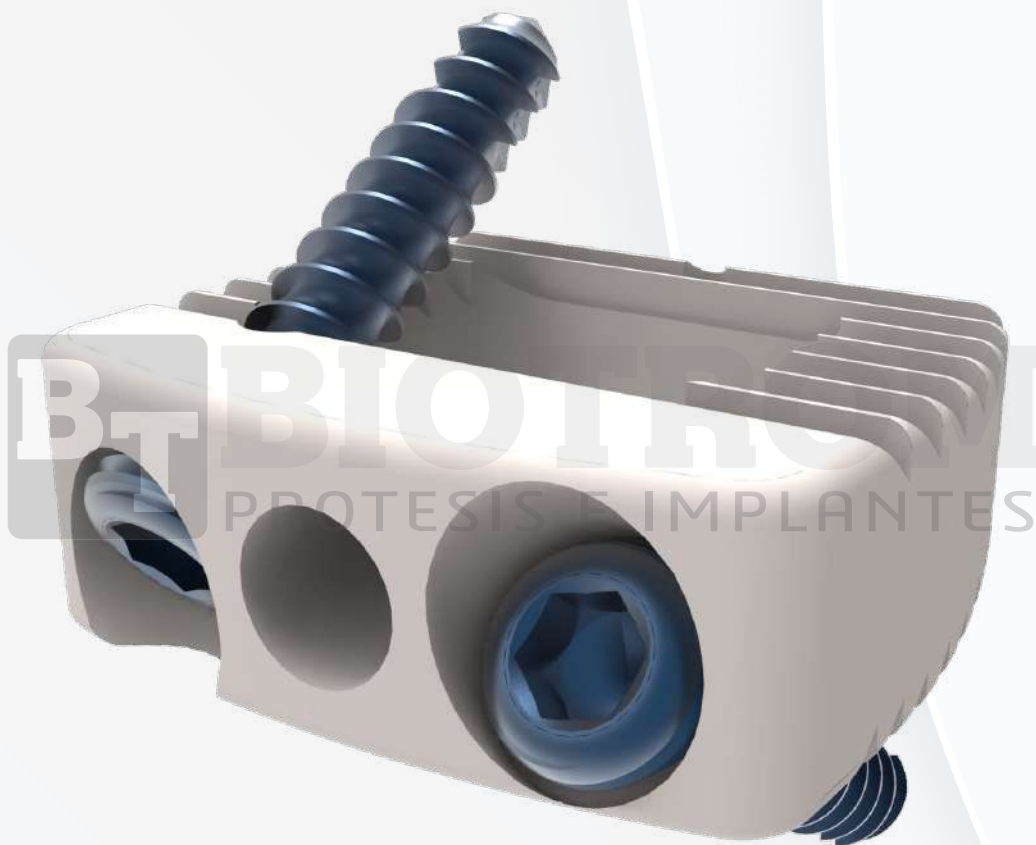




BIOTROM
PROTESIS E IMPLANTES

COLUMNA CERVICAL

CAGE CERVICAL
AUTOBLOQUEADO



Medidas: 4 x 5
5 x 6
6 x 7
7 x 8

Tornillo Bloqueado: 2.7 mm

Largo: 10 /12 /14 /16 mm